

# The Woodbridge Wyvern

**Issue No. 10**  
January 24, 2025

## Dates At A Glance

Jan 22-28	Exams
Jan 29	Exam review day <a href="#">Lunar New Year</a>
Jan 30	Semi-Formal - Winter Ball
Jan 31	PA Day - No School
Feb 3	Semester 2 Begins
Feb 4-11	Course Selection Classroom Visits
Feb 10	Grad Retakes/ S2
Feb 11-13	S1F1 Report Cards eDistribution
Feb 12	Immunization Clinic
Feb 13	Course Selection Night OUAC Transmission
Feb 14	<a href="#">Valentine's Day</a> OCAS Transmission
Feb 17	Family Day - No School
Mar 1-30	<a href="#">Ramadan</a> Begins
Mar 5	<a href="#">Ash Wednesday</a>
Mar 20	<a href="#">Naw-Ruz</a>
Mar 21-24	Interim Report Card eDistribution
May 22	Prom
June 25	Graduation

## DAILY SCHEDULE

PERIOD	TIME
Warning Bell	8:50 a.m.
HR	8:55 a.m. - 9:00 a.m.
1	9:00 a.m. - 10:15 a.m.
2	10:20 a.m. - 11:35 a.m.
Lunch	11:35 a.m. - 12:40 p.m.
3	12:40 p.m. - 1:55 p.m.
4	2:00 p.m. - 3:15 p.m.



## HELPFUL LINKS:

[WC Website](#), [YRDSB Website](#)  
[WC Twitter](#), [WC Instagram](#)

## CARING & SAFE SCHOOLS:

[Crimestoppers](#), [Kids Help Phone Report It \(YRDSB\)](#)

## Dear Woodbridge College Community,

It is with mixed emotions that we announce the transfer of our wonderful Vice Principal, Mr. Wesson, to Tommy Douglas Secondary School for the upcoming semester. Mr. Wesson has been an integral part of our Woodbridge College family for the past five years, and his departure will be deeply felt by students, staff, and families alike.

Throughout his time here, Mr. Wesson has demonstrated unwavering dedication, compassion, and leadership. His efforts to support students have significantly contributed to the growth and success of our school. Whether it was through his supportive presence at school events, his open-door policy for students, or his collaborative approach with staff, Mr. Wesson has left a lasting mark on our community.

Please join us in expressing our heartfelt gratitude to Mr. Wesson for his outstanding service and wishing him all the best in his future endeavors.

### Board Trustee

**Dr. Elizabeth Sinclair**

905-953-0562

[elizabeth.sinclair@yrdsb.ca](mailto:elizabeth.sinclair@yrdsb.ca)

### Superintendent of Schools

**Otilia Olteanu**

905-764-6830

[otilia.olteanu@yrdsb.ca](mailto:otilia.olteanu@yrdsb.ca)

### Principal

**Michelle Randall**

905-851-2843

[michelle.randall@yrdsb.ca](mailto:michelle.randall@yrdsb.ca)

### Vice-Principal

**Tim Wesson**

905-851-2843

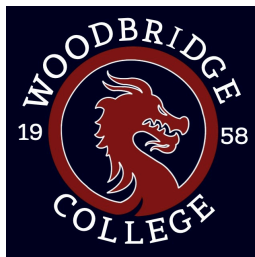
[timothy.wesson@yrdsb.ca](mailto:timothy.wesson@yrdsb.ca)

### Vice-Principal

**Janice Bordonali**

905-851-2843

[janice.bordonali@yrdsb.ca](mailto:janice.bordonali@yrdsb.ca)



## *The Woodbridge Wyvern*

**Issue No. 10**  
January 24, 2025

### Attendance at WC

#### **ATTENDANCE ABSENCE REPORTING**

Parents/ guardians please email attendance absences to [woodbridgecollege.attendance@yrdsb.ca](mailto:woodbridgecollege.attendance@yrdsb.ca)  
Please note, EDSBY is **not** monitored for student absenteeism.

### School Council Upcoming Dates

- Thursday, February 20, 2025 at 7:00 p.m.
- Thursday, May 15, 2025 at 7:00 p.m.

Families wishing to connect directly with our School Council can do so by emailing:  
[woodbridge.college@sc.yrdsb.ca](mailto:woodbridge.college@sc.yrdsb.ca)

### YRDSB Resources and Opportunities

#### **Severe Weather - Bus or School Cancellations**

With winter weather here, we want to share some important reminders for families.

When an inclement weather or extreme cold day is declared, school transportation (including buses and taxis) is cancelled in the morning and afternoon. Schools will remain open. If you drive your child to school, or your child takes alternate transportation, you must make arrangements for your child to get home at the end of the day. Please call the school if your child will not be attending school on those days. Students will not be penalized for missing school on these days.

There may be rare instances when emergency winter events occur and we need to close all schools and Board locations. Please take the time to make plans in the event of an emergency school closure.

Information about transportation cancellations and Board closures will be shared through local media, Board and school websites and on X @YRDSB.

Our process for extreme cold, inclement weather and emergency weather days is outlined in the Board's Severe Weather policy.

#### **Black History Month Event**

An inspiring evening with interactive performances, student showcases and dinner.  
February 27, 2025 from 6:00 p.m - 8:00 p.m. at Tommy Douglas Secondary School.  
Please see our [flyer](#) for more information and to register.

#### **Aquatic Leadership Program - Part 1 and Part 2**

The registration for the Aquatic Leadership Program - Part 1 and Part 2 has been open, and there are spots still available. For more information on how to register, access the following [Aquatics Leadership Program link](#). Students must register for the program on the Board website before registering with the municipality. Students have until February 1, 2025, to register for Part 1, as they will be required to pass a swimming test, before classes start. The deadline to register for part 2 is February 6, 2025.  
[ALP Final Parts 1 and 2 - Winter 2025 Program Info.](#)



# The Woodbridge Wyvern

Issue No. 10  
January 24, 2025

## Winter Walk Day

Winter Walk Day is celebrated by schools across Canada on the first Wednesday of February each year. This year, Winter Walk Day officially kicks off on Wednesday February 5th, 2025.



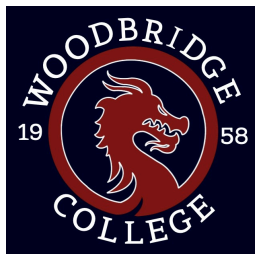
If you are driving, please follow road rules. Remember that our school zones are busy with students and families. It is important that we all follow the rules to ensure student safety.

- Use the kiss and ride. Do not use dedicated bus lanes.
- Consider parking near the school and walking the rest of the way (obeying all neighbourhood parking rules).
- Obey all speed limits and road traffic signs in school zones.
- Focus on the road and watch for crossing guards and students crossing the road.

## DO NOT ENTER HERE



ENTER HERE



## *The Woodbridge Wyvern*

**Issue No. 10**  
January 24, 2025

It's never too early to start to teach road safety. Your child will become a safe, responsible and independent pedestrian by experience and practice. Starting them as young as kindergarten will equip them with the skills they need to walk on their own in all seasons at an earlier age.

Working together, we can all help to keep students safe. For more information about how you can help to create a safe school transportation zone, please visit our [website](#).

### **Tenants Rights Workshop**

You are invited to free Virtual Tenant Rights Workshops offered in partnership with the Canadian Centre for Housing Rights from January through April 2025. Please see [link](#) for more information and registration.

### **Understanding & Navigating the Education System - Families of YRDSB Black Students January Session**

Families, parents and caregivers are welcomed to join in on Monday, January 27, 2025 from 6:30 p.m. to 7:30 p.m. for our monthly virtual meeting, where families of Black children come together to learn about resources and upcoming programs for Black students in both elementary and secondary schools. Please see our [flyer](#) for more information and to register.

### **Centre for Black Excellence Mailing List**

We would like to encourage families to subscribe to the mailing list to stay up to date with information about school board and community events and programs that would benefit Black students and families with Black children and updates on Board efforts to dismantle anti-Black racism. Please see our [flyer](#) for more information on how to subscribe to the mailing list.

### **360°Kids Information Flyer**

360°kids is dedicated to helping at-risk and unhoused youth by providing essential support services in housing, employment, health, and education. Please see our [flyer](#) for more information.

### **YRDSB FAMILY DASHBOARD**

A family portal including;

- parent/guardian authentication
- secure access to report card links
- links to useful information for parents/guardians

[Newsletter](#)

### **The Supreme Court of Canada's 150th Anniversary Art Contest**

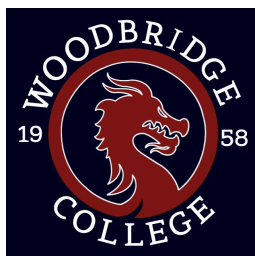
Students ages 5-17 are invited to participate in The Supreme Court of Canada's art contest, celebrating the SCC's 150th anniversary. Deadline -Your artwork has to be received no later than January 31, 2025. For contest rules visit: [Rules](#) Please see the flyer for more information. [Flyer-Art Contest](#)

### **Sankofa Mentoring Program**

The Sankofa Mentoring Program is for students in grades seven to twelve, online on Thursdays from 6:30pm to 8:30pm and two Saturday's per month in person 10 am to 1pm at Bur Oak Secondary School, Markham Ontario. The environment creates a safe space for students, and mentors to come together in unity and learn more about their heritage. Through collective work/responsibility, we have created an environment where creativity and cooperative economics work together to engender self-determination. The program was developed in the follow structure:

- Rooted in an Afrocentric Framework





# The Woodbridge Wyvern

Issue No. 10

January 24, 2025

- Three tier model (life skills, community engagement and civic responsibility)
- Highlights the principles of the Nguzo Saba – (The Seven Principles) Unity, Self-Determination, Collective Work and Responsibility, Cooperative Economics, Purpose, Creativity, Faith, and Self-Respect

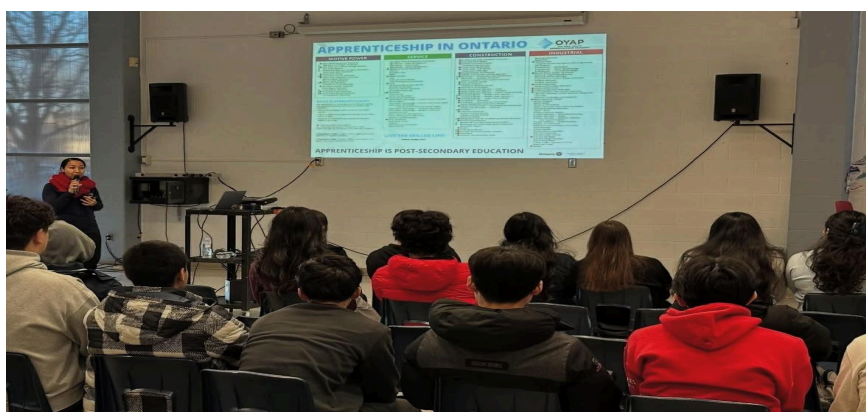
[Register Here](#)

## CO-OP & Pathway Opportunities

Earlier this month, our Grade 10 students had the privilege of hearing from a guest speaker from Skills Ontario. The presentation highlighted the exciting opportunities available in the skilled trades and technologies, emphasizing the importance of hands-on experience and essential skill development.

The speaker also showcased various pathways for students to consider, including the Ontario Youth Apprenticeship Program (OYAP), Dual Credit and Specialist High Skills Major. This informative and engaging presentation encouraged our students to think critically about their future career options and the many benefits of pursuing a career in the skilled trades.

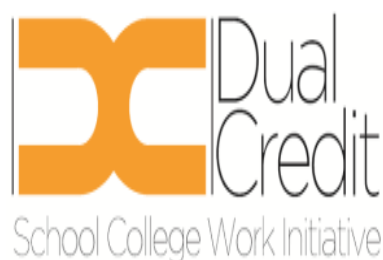
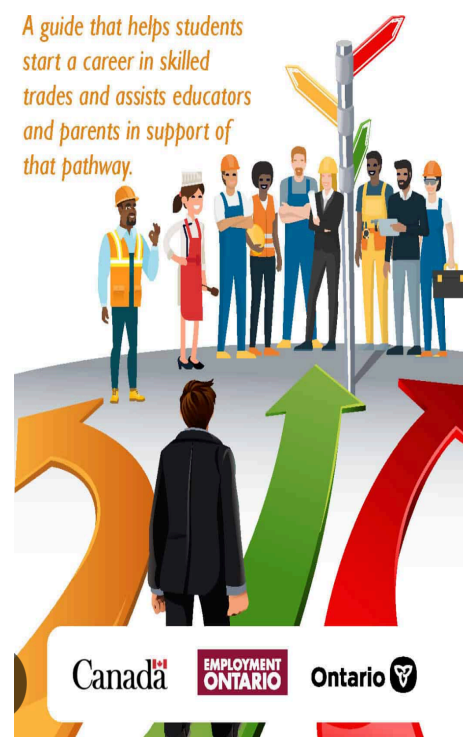
Interested in the skilled trades? Connect with a member of our Co-op Department or Guidance.

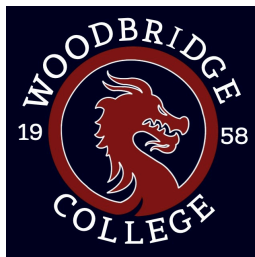


## Pathways to Careers in Skilled Trades



*A guide that helps students start a career in skilled trades and assists educators and parents in support of that pathway.*





# The Woodbridge Wyvern

Issue No. 10  
January 24, 2025



On behalf of Woodbridge College's Cooperative Education Program, I would like to extend our heartfelt gratitude to our community partners for the exceptional support, guidance, and mentorship they have provided to this semester's co-op students. Their commitment to the cooperative education program has played a pivotal role in the personal and professional development of our students.

Through their invaluable contributions, our students have gained not only industry-specific knowledge and a deeper understanding of industry terminology and tools, but also hands-on experience that is essential for building their confidence and skill sets. Their dedication to fostering an environment where students can apply classroom learning to real-world situations has truly inspired our students to reach their full potential.

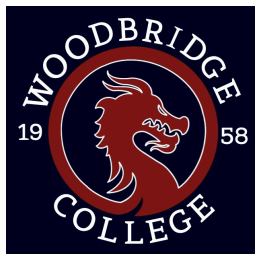
The time and resources our community partners have devoted to mentoring our students has not only helped shape their technical expertise but has also given them a clearer sense of purpose and direction in their careers. Their involvement has demonstrated the importance of a strong partnership between education and industry, and their efforts have made a lasting impact on these young individuals.

We are incredibly grateful for the opportunity to collaborate with dedicated and supportive community partners. Thank you all for helping inspire and prepare today's youth for a successful future.

Warm regards,

Christina Bazzo and Ashleen Raina





## Health Care Plans for Students

If your child has a serious life-threatening allergy or medical condition, please inform the office to complete the appropriate medical forms. There are students and staff members in our school who have life-threatening allergies to nuts and other allergens. To help create an allergen-safe environment, do not bring nuts or nut products to school.

It is critical that parents and guardians share information with us about students' serious or life-threatening medical conditions or other health-related matters so that we can create fulsome Health Care Plans that help keep students safe. We encourage students, who are able, to contribute to the creation of these plans too.

Please access forms below as needed. Completed forms and medication can be placed in a sealable bag, with the student's name marked on the bag and left in the Main Office. As always, please contact us with any questions or concerns.

[Health Care Plan Form](#)

[Diabetes Health Care Plan](#)

[Asthma Health Care Plan](#)

[Anaphylaxis Health Care Plan](#)

[Epilepsy/Seizure Disorder Health Care Plan](#)

## Guidance Corner

1. Students and/or parents are able to make a Guidance appointment with Ms. Kolianou or Ms. Neally through teachassist. Please wait for a response to see if your chosen date and time are available.

### 2. Course Selection Support Night

Students, with their parents/guardians are invited on **Thursday, February 13, 2025 from 6:30-8:30 PM in the Cafeteria** to attend a drop-in session to complete course selection (on MyPathwayPlanner) and have questions answered about specific courses and pathways

- Bring your own device
- Submit your course selection
- Explore French Immersion, Coop, SHSM and/or grade specific courses

Guidance will be visiting classes **Feb 5th to 11th** to help answer any questions students may have. The course selection window will be open from Feb 13th to Feb 21st.

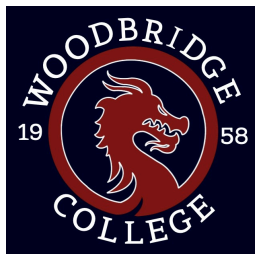
### 3. Grade 12's

- **College applications** for equal consideration are due by February 1, 2025, please submit your application before this date.

### 4. School Nominated Scholarships

#### **Western's National Scholarship Program (School nominated scholarship)**

National Scholarships are designed to recognize all-round excellence. They are awarded on the basis of outstanding academic performance to candidates who demonstrate ability for creative and innovative thought and a passion for the pursuit of learning. National Scholarships also recognize exceptional



## The Woodbridge Wyvern

Issue No. 10  
January 24, 2025

achievement in extracurricular activities such as the arts and athletics. A special emphasis is placed on a candidate's ongoing contributions to school and community life.

Western's National Scholarship Program is awarded to a graduate with a minimum of 90% average in six grade 12 U/M courses and indicates University of Western Ontario as an OUAC choice.

Application Information: [National Scholarship Program](#)

For nomination consideration please complete the following form [School Nominated Scholarship Form](#) by **February 6th, 2025 by 3pm.**

### SCHULICH BUILDERS SCHOLARSHIP FOR SKILLED TRADES

To be considered for the Scholarship, you must be nominated by your school. Five nominees can be chosen. Nominees must be enrolling in a full-time eligible skilled trade one-year certificate or two-year diploma program at a participating college starting in Fall 2024. If you wish to be considered for this nomination and you meet the criteria, please see your guidance counsellor. For nomination consideration please complete the following form [School Nominated Scholarship Form](#) by **February 6th, 2025 by 3pm.**  
**Feb 16, 2025**

## Mental Health Supports

### Student Mental Health and Addictions Letter

[January 2025 - Continuing the Journey: Supporting Mental Health and Well-Being](#)  
[December 2024 - Windows to Wellness](#)

### Inclusive School and Community Services

Inclusive School and Community Services support schools in developing a learning and school environment that is respectful, supportive and welcoming to all. This includes building and maintaining strong partnerships with parents, community, community organizations and social service agencies to ensure the Board is able to meet the diverse needs of our school communities. See [YRDSB website](#) for details.

### Services to Support Mental Health

- Family Services of York Region - 905-883-6572
- Trans Lifeline: <https://translifeline.org>
- YRDSB Trans Student Support Group – Bi-weekly meetings 3:30 – 4:30 – contact Max at [max.denley@yrdsb.ca](mailto:max.denley@yrdsb.ca) Also offered in: Ukrainian, Russian, Dari, Mandarin and Arabic

### Academic Supports

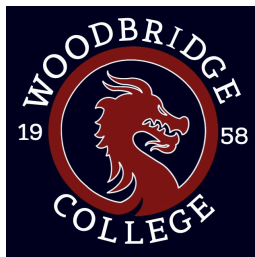
[YRDSB Student Tools and Supports](#)

### Supporting Mental Health:

#### Crisis Mental Health Supports for Students:

- [310-COPE](#): 905-310-COPE (2673) or 1-855-310-COPE (2673) - avail. 24/7
- [KidsHelpPhone](#): 1-800-668-6868, text 686868 - available 24/7, <https://kidshelpphone.ca>
- [York Hills Help Phone Line](#): 905-503-9561 Monday, Wednesday, Friday 9:30-4:00 p.m. for children and youth (0-18 years) and their parents, caregivers or adult supporters.





# *The Woodbridge Wyvern*

**Issue No. 10**  
January 24, 2025

- **Mental Health Helpline:** 1-866-531-2600 - available 24/7

## **Culturally Relevant Mental Health Supports:**

We recognize the importance of supporting our students, families, and staff during these challenging times. While many remember and reflect on current events, in response, the following culturally responsive supports are available to our families:

### **1) TAIBU Community Health Centre**

- Clinic: 416-644-3536 - <http://taibuchc.ca/en/>
- Taibu provides intersectional, equity-based and culturally affirming practices for YRDSB students who self-identify as Black:
- Individual Therapeutic Counselling for individuals and parents/families/caregivers.
- Referrals for individual counselling can be made via your school's Social Worker or Psychology Services Professional.
- Group workshops for students (after school). Inquiries regarding potential workshops can be addressed to: Brittany Creighton, BSW, MSW, RSW Diabetes Education Program Social Worker / Health Promoter - Mental Health and Wrap Around Services TAIBU. [BCreighton@taibuchc.ca](mailto:BCreighton@taibuchc.ca)

### **2) Black Youth Helpline**

- Call 416-285-9944 - Toll Free 1-833-294-8650
- <https://blackyouth.ca/contact-us/>
- [Black Youth Helpline](#)

### **3) Harriet's Youth Support Line**

- 24-hour emergency / crisis response line: 1-877-695-2673
- Text messaging available for young people who do not feel like speaking to someone, but are still in need of help
- Contact [info@tubmancommunity.org](mailto:info@tubmancommunity.org) or [jdunn@peacebuilders.ca](mailto:jdunn@peacebuilders.ca) for additional inquiries.

### **4) NACCA - Newmarket African Caribbean Canadian Association (NACCA)**

- Call 905-781-6222 - <https://www.naccacommunity.ca/nacca-youth.html>

### **5) Tropicana**

- (416) 439-9009 - <https://tropicanacommunity.org/defy-your-label/>

### **6) Sikh Family Helpline: [Sikh Family Helpline](#) (1-800-551-9128)**

### **7) Naseeha Helpline: [Naseeha Mental Health](#)**

### **8) 2SLGBTQ+ Youthline: [LGBT Youthline](#)**

### **9) PFLAG Canada York Region: 1-866-YR-PFLAG (977-3524) <https://plfagyork.ca>**